



# Sakakawea Inn



**173 Summit Dr.  
Minot AFB, ND 58704**





Welcome,

On behalf of the 5th Bomb Wing Commander, the 5th Support Squadron Commander, the 91st Missile Wing Commander, and the entire Sakakawea Inn staff, we welcome you to Minot Air Force Base!

While Minot may be known for its colder climate, it is well loved for the warmth of the local community. The area is known for its beautiful state parks and breathtaking views of the plains. The local food offers unique, local dining experiences. We have included a list of our favorites within, but please do not hesitate to ask our staff for their favorites as well! In the following pages, you will find valuable information regarding our facility, services available to you, and information regarding Minot AFB and the surrounding area.

Whether you are here for business or pleasure, we want your experience with us to be wonderful. Please do not hesitate to call the front desk if there is anything that we can do to enhance your stay. We value your input and comments. Please let us know where we can improve or where we shine by completing a comment card, available in the lobby, or by completing the electronic survey you will receive upon check-out.

Once again, we welcome you to our facility and wish you a pleasant stay while at Minot AFB, where only the best come north!

Rebecca Marshall, MBA  
Lodging Manager,  
Sakakawea Inn





## Table of Contents

Pg. 1 Front Page	Pg. 21 Rental Car and Truck Services
Pg. 2 Welcome Letter	Pg. 22 On-Base Dining Options
Pg. 3 Table of Contents	Pg. 23 Off-Base Dining Options
Pg. 4 Emergency Procedures	Pg. 24 Off-Base Dining Options Cont.
Pg. 5 Emergency Procedures Continued	Pg. 25 On-Base Facility Information
Pg. 6 Shelter in Place and Housekeeping Services	Pg. 26 Weather and Climate Info.
Pg. 7 Room Rates and Sundry Sales	Pg. 27 Wind Chill Info
Pg. 8 Guest Services	Pg. 28 Area Attractions
Pg. 9 Guest Facilities	Pg. 29 Area Attractions Cont.
Pg. 10 Occupant Responsibilities	Pg. 30-35 Maps
Pg. 11 Occupant Responsibilities Cont.	
Pg. 12 Travel Items, Mail, & Weapons Policies	
Pg. 13 Pet Policy	
Pg. 14 Pet Policy Continued	
Pg. 15 Religious Services Information	
Pg. 16 Phone Dialing Instructions	
Pg. 17 Phone Dialing Instructions Cont.	
Pg. 18 TV Channels Listing	
Pg. 19 Radio Stations Listing	
Pg. 20 Transportation Services	





## Emergency Procedures and Contact Information

In the event of an emergency or fire do not panic. Activate the alarm by pulling the red fire alarm located at the end of each hallway. **Evacuate the building immediately. Assemble in the nearest parking area where a member of the lodging staff will verify you have safely evacuated the building.**

Call the base fire department at extension 911 from a phone outside the building. From your cell phone dial (701) 723-1911.

**For Emergency Services: Room Phone: Dial 911**

This will reach Police, Fire, and Ambulance services.

**Defense Switch Network (DSN): Room Phone: Dial 9794-453-XXXX**

**Suicide and Crisis Lifeline: Room Phone: Dial 988**

### Emergency Facilities On-Base

**Security Forces:** Located at 547 Tanker Trail

For Emergencies Dial: From Room: 911

From Cell Phone: 701-727-1911

Non-Emergencies Dial: 701-723-3096

### Directions from Lodging:

Make a right onto Missile Ave and then take a left on Peacekeeper Place (which is the stop light by Rockers). Finally, make a right onto Tanker Trail at the 4-way stop.





**Medical Clinic \*No Emergency Facilities\***

**Located at:** 194 Missile Avenue

**Phone Number:** 701-723-5633

**Directions from Lodging:** Take a left turn onto Missile Avenue towards Main Gate (Magic City Gate) and then turn right at the barrier lights. Finally, turn left at the Yield sign and the road will lead you to the Clinic's Main Entrance.

**Emergency Facilities Off-Base**

**Trinity Hospital \*Emergency Facilities Available\***

Located at: 2305 37th Ave SW, Minot, ND, 58701

Phone Number:

For Emergencies Dial: From Room: 911

From Cell Phone: 701-727-1911

Non-Emergencies Dial: From Room: 99-418-8000

Minot City Police Station

Located at 515 2nd Ave SW, Minot, ND, 58701

Phone Number:

For Emergencies Dial: From Room: 911

From Cell Phone: 701-727-1911

Non-Emergencies Dial: From Room: 99-852-0111





## Shelter in Place Procedures

**Building 173/175:** Please proceed to the basement Fitness Center, which is located in the lobby. You will need your key to gain access.

**Building 185 and 188:** Please shelter in your interior bathroom.

**Building 171 (Rooms 1715 and 1711):** Please shelter in the interior most bathroom.

## Housekeeping Services

Housekeeping services include daily stay-over cleaning, extended-stay service, complete check-out cleaning, and deep cleaning every six months.

### Daily Stay-Over Housekeeping Services and 3rd Day Service:

Restocking of towels, if needed.

Emptying of trash.

Re-stocking amenities (coffee supplies daily; soaps are restocked on the 7th day or upon request).

Cleaning of floor and carpet if needed.

Making of beds.

Toilet cleaning, as needed.

Bathtubs and showers cleaned, as needed.

Bathroom vanity, sink, and mirror cleaned, as needed.

### Extended –Stay Housekeeping Services (Done on 7th Day)

In addition to the above services housekeeping will:

Full linen change and beds made.

Light dusting as needed.





## **Room Rates and Sundry Sales**

All guests must pay at check-in. If cash will be used to pay as payment, a credit card is required to be placed on file as well. Guests staying for more than 15 days will be charged on the 16th day for the any miscellaneous charges and in advance for the next 15-day period.

Visiting Quarters	\$89.00
Temporary Lodging Facilities (TLF)	\$96.00
Business Suite (ODV)	\$97.00
General Suite (OGN)	\$97.00

Check-in time is at 1500 and check-out time is at 1100. If you need to request a late check-out please contact the front desk on the morning of departure. The late check-out fee is the room rate for the evening.





## **Guest Services**

### **Front Desk**

Our front desk is manned from 0600-2200. If you will be an after-hours arrival, please be sure to contact the front desk and inform them.

If there is an emergency, such as you are locked out of your room, your lock box did not open, or an emergency in your room, please contact our after-hours number at 701-723-6161. The telephone will then prompt you to press # and dial extension 3015 and press # again.

### **Extensions**

PCS-in and out guests are given up to 30 days in lodging, based upon availability. Extensions past 30 days become priority two and are considered space available. Guests with non-availability letters (CNAs) who need to extend must contact the front desk before the departure date passes. CNAs cannot be backdated or altered. Extension requests for CNAs are considered new reservation requests

### **Maintenance Issues**

If there is a maintenance issue in your room, please notify the front desk by dialing 0 on your room phone. A ticket will be put in and the issue will be addressed promptly. Please note that the maintenance team cannot enter if your DND is displayed, so please be sure to remove it. A maintenance slip is also available for you to leave on your room desk and housekeeping will pass it along to the maintenance team.







## **Guest Facilities**

### **Business Center**

The business center is located in building 173 and has PCs available for use as well as wireless access.

### **Conference Room**

The conference room is available for usage at no cost to guests. It has a large table and the room can accommodate up to 20 people. The room is equipped with computer access and projector presentations. For availability and reservations, please contact the front desk in person or by dialing 0 from your room phone. If you require additional space, the Jimmy Doolittle Event Center located next door to building 173. For reservations, please contact them at (701) 723-3731.

### **Fitness Facilities**

The lodging fitness center is located in the main building on the lower level below the lobby. The base fitness center is located 2-3 blocks from lodging. It is on Peacekeeper Place adjacent the Post Office. For more information, consult the Base Facilities section of this guide.

Laundry Facilities.

### **Laundry Facilities**

Laundry rooms are free for guest usage and are located on the second floor at the end of the hall for guests in building 185 and in the lower level below the lobby for guests in buildings 173 and 175. Your room key will gain you access to these areas. Laundry facilities are only for in-house lodging guests and guests who possess a valid letter of on-availability.





### **Occupant Responsibilities:**

DAFMAN 34-135, pg. 19. “4.4. Occupant Responsibilities in the Facilities and Guest Rooms. Occupants are responsible for their conduct and the conduct of their guests and/or family members while in AF Inns. Their actions should not infringe on the rights of others.” Guests will not abuse, threaten, harass, or use unprofessional language with Lodging staff members. Failure to adhere to these rules can lead to termination of guest stay with no Non-Availability Letter issued.

Quiet hours are from 2200-0700.

- ◇ Guests are required to maintain courtesy and professionalism when interacting with lodging staff at all times.
- ◇ Housekeeping is required to enter every room on the 3rd day, regardless of a DND sign and must provide a full service to the room on the 7th day. Pet rooms will be entered daily. If a DND is present on a DND, the staff will return after 1300 and enter the room.
- ◇ Guests will reimburse lodging for damage beyond fair wear & tear and for missing government property caused by abuse or negligence on their part or by their guest. The General Manager processes a report of survey on loss or damage to NAF assets in accordance with AFI 34-202. This includes damaged linens and towels.



### **Occupant Responsibilities Continued**

Guests may not leave trash in hallways. Dumpsters are located out back of building 188 and behind building 173. Excess trash left in rooms may be assessed a cleaning fee.

Any items left behind in the room after check-out are subject to our lost and found disposition/holding procedures per local Operating Instruction 34-135. Hygienic, toiletry, and consumable items left behind (including infant formula and pet food) will be immediately discarded by housekeeping.

Rooms requiring extra cleaning time as a result of guest neglect, trash, or dirtiness are subject to cleaning fees, including the nightly rate of the room that is unable to be sold until brought back up to a habitable state.

Upon check-out of rooms with dishes, all dishes are required to be cleaned and put away. Dishes left in the sink or found to be put away dirty will be charged a base cleaning fee of \$75.00.

Your living areas to include but not limited to bedrooms, bathrooms, living rooms and food prep areas, must be kept in a serviceable state which allows for housekeeping to clean the room to standard. Housekeeping staff is not permitted to touch or move guest items, which interferes with making beds, vacuuming, and general cleaning. Please contact housekeeping if you need extra hangers to properly store your personal items.

Rooms requiring extra cleaning time as a result of guest neglect, trash, or dirtiness are subject to cleaning fees, including the nightly rate of the room that is unable to be sold until brought back up to a habitable state.

Conserve utilities, comply with fire, health, and safety regulations.



## **Forgot a Travel Item?**

If you forgot to pack a standard toiletry item, please visit the front desk.

We also sell snacks, drinks, and meals options! Please dial 0 from your room phone to reach the front desk for a full list of items available for purchase and their prices.

## **Mail**

We do not accept mail at the Sakakawea Inn. In order to receive mail, visit the postal service center to fill out a locator card for general delivery mail. The post office's number is 701-727-6488. They are located at 220 Peacekeeper Place.

## **Firearms and Weapons Policy**

Per Minot AFB Instruction 31 Vol. 1, pg. 273, 3.6.3, the storage of Firearms and Category I, II, III weapons are not authorized to be stored in any lodging rooms. This includes weapons such as hunting knives, self-defense weapons, ammunition, etc. The 5SFS Armory is the only authorized storage facility for privately owned firearms stored by residents of lodging. The 5 SFS Armory is open 24-hours every day of the year.

Contact 701-723-3184 for assistance.





## **Pet Policy**

Due to limited availability, we may not have availability in our pet-friendly rooms during a portion of your stay or for the entirety. If we have availability in our TLF or Visiting Quarter rooms then we are required to keep you on base and are unable to issue a Certificate of Non-Availability (CNA).

In accordance with DAFMAN 34-135, pg. 22: 3.3.3.3 states, “Official travelers on orders will not be provided a CNA confirmation number solely because the lodging facility cannot accommodate accompanying pets.”

Pg. 19, 4.4.2 states, "Pets are not authorized to stay in non-pet friendly rooms unless authorized by the installation AF Inns manager.”

Pg. 19, 4.4.2.1 states, “Installation AF Inns operations will charge the guest a cleaning fee if unauthorized pets are housed in non-pet rooms.”

Pg. 20, 4.4.2.2 “Guests who violate this policy are also subject to eviction as determined by the installation AF Inns manager; appeals should be made through the FSS Commander or Director.”

To assist our guests in their search for alternative accommodations for their pets, please see the list below of boarding options for your pet(s). Please note that this facility does not have any affiliation or endorse these companies. It is possible for our availability to change before your arrival and guests are encouraged to contact the front desk regularly to inquire whether a pet-room has become available. The front desk is open from 0600-2200 and can be reached at 701-723-6161, opt. 0. Telephone charges from a commercial phone line may apply.

<b><u>Ambush Kennels</u></b>	<b><u>Overton Country Kennels</u></b>	<b><u>Sterling Kennels</u></b>	<b><u>Haugen Ranch Kennels</u></b>
701-728-6363	701-833-1193	701-500-3311	701-240-2006
6001 128th Ave. NW, Minot, ND 58703	19701-16th St NW, Glenburn, ND 58740	4620 30 <sup>th</sup> Ave NW, Minot, ND 58703	2431 3 <sup>rd</sup> Ave NW, Butte, ND 58723



## **Pet Policy Continued**

There is a strict 2 pet maximum allowance. Additional pets are not authorized and guests who violate this policy and have more than 2 pets are subject to an additional cleaning fee and termination of the remainder of their stay.

Only cats and dogs are permitted. Rabbits, hamsters, birds, and other pet types are not authorized. Guests who violate policy are subject to an additional cleaning fee and termination of the remainder of their stay.

There is a \$10 per night pet fee in addition to other lodging rates. There may be additional cleaning fees assessed if your pet damages furniture or defecates/urinates in the room.

Pets must be secured in a kennel whenever you leave your pet unattended in the room. A kennel is provided in every pet room. Violations of this policy place staff and pets at risk. Guests who refuse to comply with this policy are subject to having their pets removed and/or termination of the remainder of their stay.

Housekeeping is required to enter your room daily. DND signs will be honored until 1300 and then housekeeping will enter the room.

AF Inns is not liable for the welfare of your pet; owners are solely responsible for ensuring the safety and well-being of your pet.

Pets must be properly immunized and you must present your pet's up-to-date shot records upon check-in. Without the shot records, guests may not check into a pet-friendly room.

Pets are not allowed to sit directly on furniture or bedding.

Owners may not use lodging towels or linens to bathe pets.

Pets are not allowed in any other facilities or premises.

Each pet must be collared with your name on each collar and must be leashed when outside the facility.

If your pet continually makes excessive noise and disturbs other guests, you may be asked to kennel your pet off base.

Owners are required to pick-up/clean-up their pet's wastes and dispose properly.

Owner must acknowledge understanding by signing this Agreement prior to checking in.



## **Chaplain Corps Services**

Please dial 99 from your room phone and then the remainder of the telephone number. Telephone charges may apply.

**Emergency On-Call Chaplain:** (701) 509-4230

**Chaplain's Office:** (701) 723-2456

### **Protestant Services:**

Sundays at 10:30 a.m. at the North Plains Chapel

### **Catholic Mass Services:**

Daily Mass: 12 p.m. Monday-Thursday at the Northern Lights Chapel

Sunday Mass at 10 a.m. at the Northern Lights Chapel

### **Wicca/Pagan/Neo Pagan**

#### **Open Circle**

1st and 3rd Saturdays of the month at 10:00 a.m. at the Northern Lights Chapel

#### **Norse Pagan**

2nd and 4th Saturdays of the month at 10:00 a.m. at the North Plains Chapel

### **Northern Lights Chapel Address:**

230 Missile Avenue

### **North Plains Chapel Address:**

290 Peacekeeper Place





## Telephone Dialing Instructions

Room to Room	Dial the guest room number
Front Desk	0
Base Operator	94 + 453 – 1110
To Base Extension	94 + 453 + four digit number
DSN	94 + DSN number
Local Calls (Off Base)	99 + 701 + seven digit number
Do not add the “1” before the Area Code for local calls as inserting “1” will result in a toll charge.	
Direct Dial Long Distance	99 + 1 + Area Code + Number
Charge to Guest: \$0.10 Per Minute with following	
Exceptions:	Alaska: \$0.41 Per Minute
	Hawaii: \$0.26 Per Minute
	US Virgin Islands: \$0.20 Per Minute
Operator Assisted calls are billed to your Calling Card by Carrier or to party accepting the collect call.	0 + Calling Card & Collect 99 + 0 + Area Code + Number
International Direct Dial	99 + 011 + Country Code + Number
Charge to Guest: Rates available at the Front Desk	
International Credit Card	99 + 01 + Number, Wait for Operator to Answer







## **Telephone Dialing Instructions Continued**

1 + 8XX Numbers 99 + 1 + 8XX + Number

Applies to: 800, 888, 877 No Charge 866, etc.

### **To Register/Change Automatic Wakeup:**

Dial 5000 and follow voice prompts

### **To Cancel Automatic Wakeup:**

Dial 5000

### **To Retrieve Messages From Your Telephone Mail Box:**

A red light on your telephone receiver means that you have a message waiting. We use our broadcast delivery system to send vital notices to guests. Be sure to check your message following these instructions.

To retrieve and/or delete messages from your room dial 5000 and follow the voice prompts. (Note: if you have a Cisco Phone you may just press the message button.)

### **Lodging Phone Number Directory**

Front Desk                      723-6161, opt. 0

\*Available from 0600-2200

Guest Services Manager      723-6161 ext 3012

Housekeeping Supervisor    723-6161 ext 3011

Accountant                      723-6161 ext 3001

Maintenance                    723-6161 ext 3009





**Channel Station**

2	ABC Family	37	Nickelodeon
3	KXMC- CBS	38	Cartoon Network
4	KXND- FOX	39	TV Land
5	C-SPAN	40	A&E
6	KSRE- PBS	41	Court TV
7	KMOT- NBC	42	Animal Planet
8	WGN	43	TLC
9	KMCY- ABC	44	Sci-Fi Channel
10	Commander's Channel	45	History
11	Classified Ad	46	Fox News
12	TBS	47	MSNBC
13	Univision	48	Headline News
14	CW	49	CNBC
15	Weather Channel	50	C- SPAN
16	Discovery Channel	51	Turner Classic Movies
17	Speed Channel	52	Bravo
18	TV Guide Channel	53	AMC
19	Local Channel	54	FOX Movies
20	QVC Shopping	56	FX Network
21	CNN	57	USA Network
23	Midcontinent Channel	58	TNT
25	ESPN	59	Spike
26	ESPN 2	61	Comedy Central
28	Fox Sports North	62	E! Entertainment
29	Lifetime	63	<u>BET</u>
30	Oxygen	64	MTV
31	Women's Entertainment	65	MTV 2
32	Hallmark Channel	66	VH1
33	Food Network	67	Great American
34	Travel Channel	68	CMT
35	HGTV	69	Versus
36	Disney Channel	70	Fit TV





## **Radio Stations**

### **AM Stations**

KCJB 910 - Traditional Country

KHRT 1320 – Christian Contemporary

KRRZ 1390 - Classic Rock

### **FM Stations**

KMPR 88.9 – Public Radio

KCJB 91 - Country

KIZZ 93.7 – Top-40

KYYX 97.1 - Country

KMXA 99.9 – Best Mix of 80s, 90s and Today

KBTO 101.9 - Country

KZPR 105.3 – Classic Rock

KHRT 106.9 - Christian





## **Transportation Services**

### **Airport**

Minot International Airport

Phone Number: (701) 857-4724

More information can be found online at:

<https://www.motairport.com/101/Airport>

### **Bus Lines**

Minot City Bus

Phone Number: (701)4148

Schedules can be found online at: <https://www.minotnd.gov/294/City-Transit>

### **Train Service**

Amtrak

Phone Number: 1-800-872-7245

Information regarding their services can be found online at:

<https://www.amtrak.com/stations/mot>





## **Rental Car and Rental Truck Services**

Rental	Phone Number: (701) 839-1982
Avis Car Rental	Phone Number: (701) 838-7665
Enterprise	Phone Number: (701) 420-9867
Rent-A-Wreck	Phone Number: (701) 838-0098
Penske Truck	Phone Number: (701) 839-5829
U-Haul	Phone Number: (701) 852-0463





## On-Base Dining Options

Below are just a few of the food options available on-base. Below are just a few of the food options available off-base.

**Burger King** (701) 727-6518      **The B-Fifty Brew** (701) 727-4377  
270 Missile Ave.      202 Peacekeeper

Place

**Papa John's** (701) 727-7272      **Hunt's Brothers** (701) 727-9322  
300 Missile Ave      **Pizza**

Located inside of the  
Shoppette Express

**Dakota Inn (Dining Facility)** (701) 723-2359

213 Tanker Trail

**Flight Kitchen**

846 Fighter Road

**Rockers Bar & Grill** (701) 727-ROCK

292 Peacekeeper Place

**Bomber Bistro** (701) 727-4377

202 Peacekeeper Place

**AAFES Food Court** (701) 727-5201

-Subway

-Charley's

-Popeye's

-Taco Bell





## **Off-Base Dining Options**

Below are just a few of the food options available off-base. Please dial 99 from your room phone and then the remainder of the telephone number. Telephone charges may apply.

### **JL Beers**

JL Beers is known for their craft beer selection and burgers, fresh fries, and chips.

\*\*Must be 21 to enter

2001 22<sup>nd</sup> Ave SW

(701) 838-233

[www.jlbeers.com](http://www.jlbeers.com)

### **Denny's**

Denny's is best known for their famous breakfast selection but is also great for lunch and dinner. They have a variety of pancakes, waffles and even T-bone steak!!

2701 S Broadway (Hwy 83 South)

(701) 837-5646

[www.dennys.com](http://www.dennys.com)

### **Badlands Restaurant and Bar**

Badlands Restaurant and Bar offers fresh salads and a variety of seafood. 1400 31<sup>st</sup> Ave SW (South of Dakota Square Mall)

(701) 852-7335





## Off-Base Dining Options

### **Mi Mexico**

Mi Mexico serves up fresh authentic Mexican cuisine. Their chips and queso dip are a crowd pleaser. Everything is made to order and served hot by courteous, friendly staff.

3816 S Broadway

(701) 858-0777

### **ND Asia**

Check out ND Asia's fusion restaurant and lounge, serving Japanese and Chinese cuisine along with a hibachi grill.

3400 16<sup>th</sup> St. SW

(701) 852-1240

[www.nd-asia.com](http://www.nd-asia.com)

### **Longhorn Steakhouse**

Head to Longhorn Steakhouse for the best steak done right. Their steakhouse restaurant serves the highest quality beef, ribs, chops and more.

1707 22<sup>nd</sup> Ave SW

(701) 858-1707







## On-Base Activities

Below are just a few of the activities that Minot AFB has to offer. Their hours of operation are subject to change, so please contact them directly for hours of operations. Please dial 99 from your room phone and then the remainder of the telephone number. Telephone charges may apply.

<u>M&amp;FRC</u>	<u>723-3950</u>	<u>Military Clothing Sales</u>	<u>723-3341</u>
291 Peacekeeper Place		Located inside of the Main Exchange	
<u>Alterations</u>	<u>727-6800</u>	<u>Outdoor Recreation</u>	<u>723-3648</u>
Located inside the Main Exchange (BX)		146 Missile Avenue	
<u>Arts &amp; Crafts</u>	<u>723-3640</u>	<u>Rough Rider Golf Course</u>	<u>723-3164</u>
583 Tanker Trail		1176 Golf Drive	
<u>Auto Hobby</u>	<u>723-6815</u>	<u>Rough Rider Lanes</u>	<u>723-2610</u>
583 Tanker Trail		(Bowling Center) 140 Peacekeeper Place	
<u>Barber Shop</u>	<u>723-4868</u>	<u>Shoppette/Class VI</u>	<u>727-9997</u>
Located inside the Main Exchange (BX)		186 Missile Avenue	
<u>Beauty Shop</u>	<u>727-5545</u>	<u>Veterinarian</u>	<u>723-6449</u>
Located inside the Main Exchange (BX)		284 Missile Avenue	
<u>Child Development Center</u>	<u>723-3750</u>		
166 Missile Avenue			
<u>Commissary</u>	<u>723-4559</u>		
246 Missile Avenue			
<u>Community Center</u>	<u>723-4670</u>		
202 Peacekeeper Place			
<u>Family Child Care</u>	<u>723-6662</u>		
168 Summit Drive			
<u>Fitness Center</u>	<u>723-2145</u>		
455 Tanker Trail			
<u>Jimmy Doolittle Ctr</u>	<u>723-3731</u>		
174 Summit Drive			
<u>Library</u>	<u>723-3344</u>		
156 Missile Avenue			
<u>Main Exchange (BX)</u>	<u>723-4717</u>		
248 Missile Avenue			



## Minot Climate

Minot experiences four distinct seasons, including warm summers and very cold winters. Temperatures below 0°F (-18°C) are common in the winter months, while temperatures can reach 100°F (38°C) in the summer.

---

### Monthly Average High Temperatures

---

	Jan	Feb	Mar	Apr	May	Jun	Jul	Aug	Sep	Oct	Nov	Dec
°F	18.2	25.2	36.6	53.7	67.2	75.6	81.2	80.6	68.4	55.2	35.0	23.0
°C	-7.7	-3.8	2.6	12.1	19.6	24.2	27.3	27.0	20.2	12.9	1.7	-5.0

---

### Monthly Average Precipitation

---

	Jan	Feb	Mar	Apr	May	Jun	Jul	Aug	Sep	Oct	Nov	Dec
Inches	.65	.53	1.05	1.55	2.31	3.15	2.70	1.95	1.74	1.32	.86	.63
MM	16.5	13.5	26.7	39.4	58.7	80.0	68.6	59.5	44.2	33.5	21.8	16.0

---





## Wind Chill Information

Wind chill is something to take into account during winter months as well. Please refer to the chart below for wind chill calculation.



## Wind Chill Chart



		Temperature (°F)																	
Calm		40	35	30	25	20	15	10	5	0	-5	-10	-15	-20	-25	-30	-35	-40	-45
Wind (mph)	5	36	31	25	19	13	7	1	-5	-11	-16	-22	-28	-34	-40	-46	-52	-57	-63
	10	34	27	21	15	9	3	-4	-10	-16	-22	-28	-35	-41	-47	-53	-59	-66	-72
	15	32	25	19	13	6	0	-7	-13	-19	-26	-32	-39	-45	-51	-58	-64	-71	-77
	20	30	24	17	11	4	-2	-9	-15	-22	-29	-35	-42	-48	-55	-61	-68	-74	-81
	25	29	23	16	9	3	-4	-11	-17	-24	-31	-37	-44	-51	-58	-64	-71	-78	-84
	30	28	22	15	8	1	-5	-12	-19	-26	-33	-39	-46	-53	-60	-67	-73	-80	-87
	35	28	21	14	7	0	-7	-14	-21	-27	-34	-41	-48	-55	-62	-69	-76	-82	-89
	40	27	20	13	6	-1	-8	-15	-22	-29	-36	-43	-50	-57	-64	-71	-78	-84	-91
	45	26	19	12	5	-2	-9	-16	-23	-30	-37	-44	-51	-58	-65	-72	-79	-86	-93
	50	26	19	12	4	-3	-10	-17	-24	-31	-38	-45	-52	-60	-67	-74	-81	-88	-95
	55	25	18	11	4	-3	-11	-18	-25	-32	-39	-46	-54	-61	-68	-75	-82	-89	-97
60	25	17	10	3	-4	-11	-19	-26	-33	-40	-48	-55	-62	-69	-76	-84	-91	-98	

Frostbite Times     30 minutes     10 minutes     5 minutes

**Wind Chill (°F) = 35.74 + 0.6215T - 35.75(V<sup>0.16</sup>) + 0.4275T(V<sup>0.16</sup>)**  
 Where, T= Air Temperature (°F)    V= Wind Speed (mph)    Effective 11/01/01





## Area Attractions

### **Black Butte Adventures**

Located approximately 18 miles SE of Minot  
701-626-2226

Black Butte Adventures offers outdoor family getaways for mountain bikers and hikers. Encompassing over 500 privately owned acres of native prairie short grass and flowers traveling through some of the region's most diverse terrain. You can experience some of ND's best prairie land.

[www.blackbuttheadventures.com](http://www.blackbuttheadventures.com)



### **Dakota Territory Air Museum**

100 34th Ave. NE  
(701) 852-8500

Located just north of the Minot International Airport on Highway 83 you will find the Dakota Territory Air Museum. The museum was founded in 1986 with the dream to provide the most comprehensive aviation facility in the state and the region. Here you will find a variety of military and civilian aircraft, numerous aviation photographs, and a large collection of aviation literature and periodicals. You will also find a large collection of memorabilia relating to this region's military aviation service and history.

[www.dakotaterritoryairmuseum.com](http://www.dakotaterritoryairmuseum.com)



### **Minot Railroad Museum**

19 First Street NE, Minot  
(701) 852-7091 or (701) 833-7421

The community of Minot grew overnight with the development of the railroad which provided for a rich history in the community. The Minot Railroad Museum displays more than 100 years of rail history, including photos, memorabilia, communication systems, and much more. The museum focuses on regional railroading from 1886 to the present. [www.railroadmuseumofminot.org](http://www.railroadmuseumofminot.org)





## Area Attractions

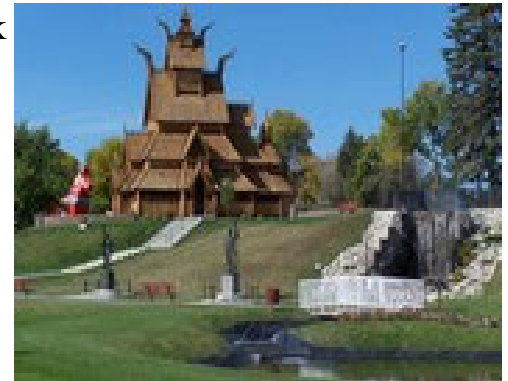
### **Scandinavian Heritage Park**

1020 South Broadway  
701-852-9161

The Scandinavian Heritage Park is a tribute to the Scandinavian culture and ancestors who settled in the Minot area. The park includes many buildings and statues including a full size replica of a Stav church, an authentic Finish sauna, a Danish windmill, a 220 year old house from Sigdal, Norway, and much more. Office Hours: M - F from 10am - 4pm; park tours available mid May through Labor Day, M – F from 10am - 4pm or by appointment.

The Scandinavian Heritage Park is also home to the Scandinavian Heritage Visitors Center, including the offices of the Minot Convention and Visitors Bureau, the Scandinavian Heritage Association, the Norsk Høstfest, and the Sons of Norway Thor Lodge.

[www.scandinavianheritage.org](http://www.scandinavianheritage.org)



### **Parks in Minot**

#### **Oak Park**

1305 Fourth Ave NW, Minot, ND

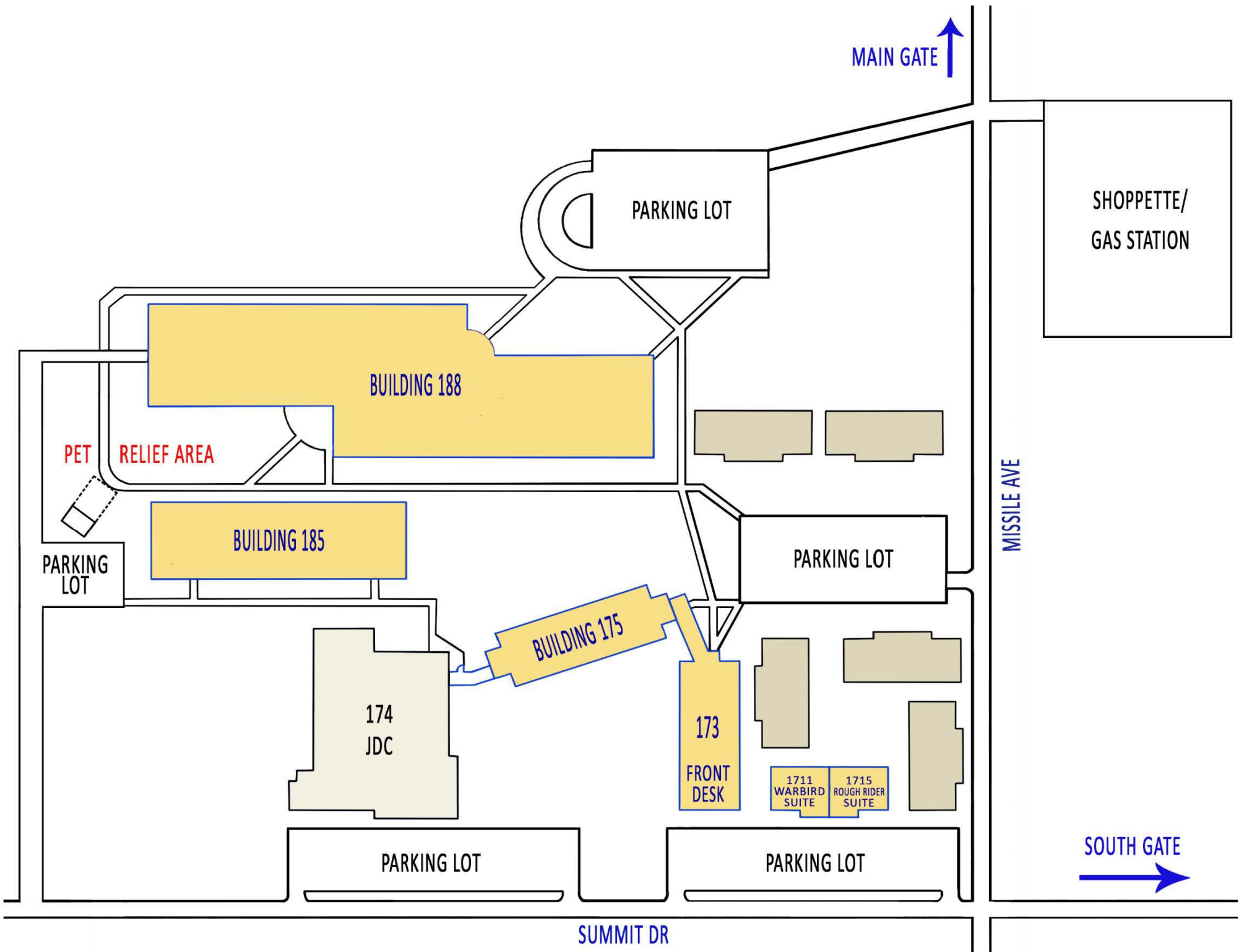
Includes walking and fitness trails. Site of socials and Farmers Market in season.

#### **Roosevelt Park & Zoo**

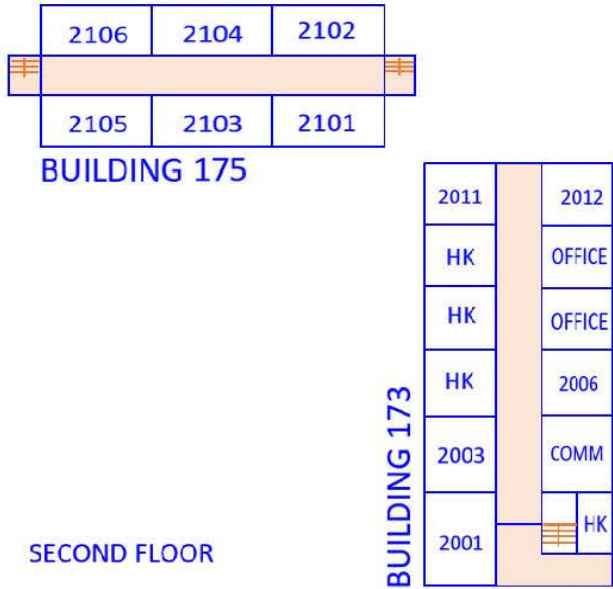
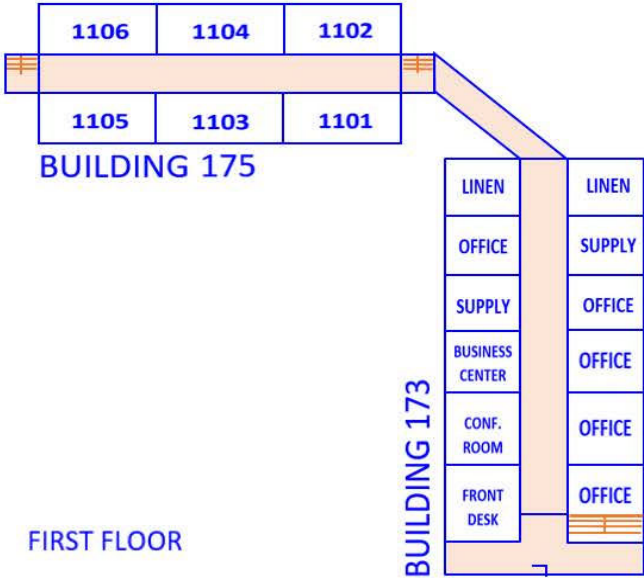
1219 Burdick Expressway East, Minot

Our largest and most established park. Includes small amusement park, outdoor pool, bandstand, and the largest zoo between Minneapolis and Seattle.





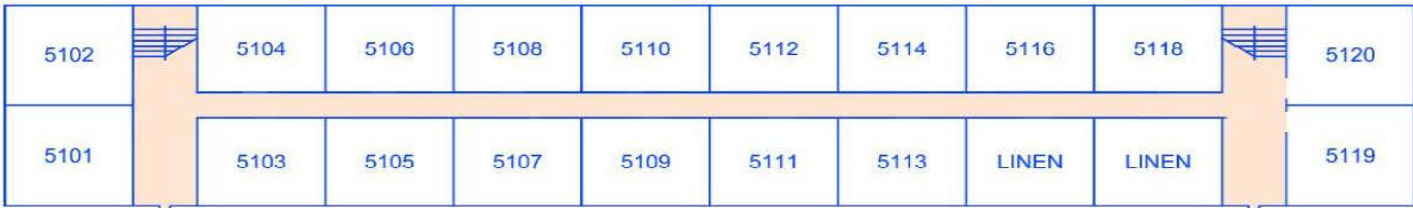
# SAKAKAWEA INN ♦ MINOT AFB



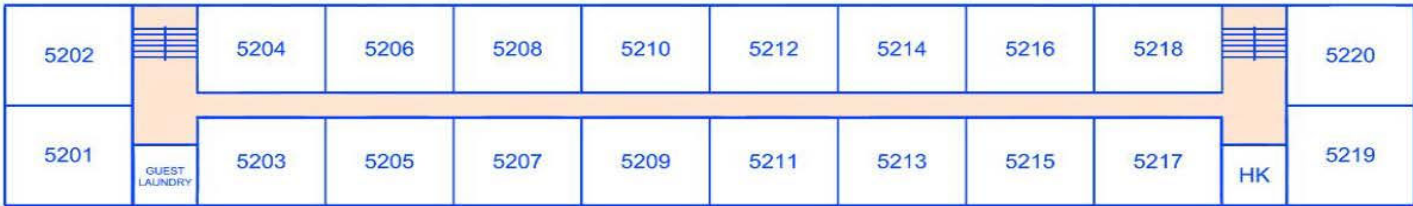
FIRST FLOOR

SECOND FLOOR

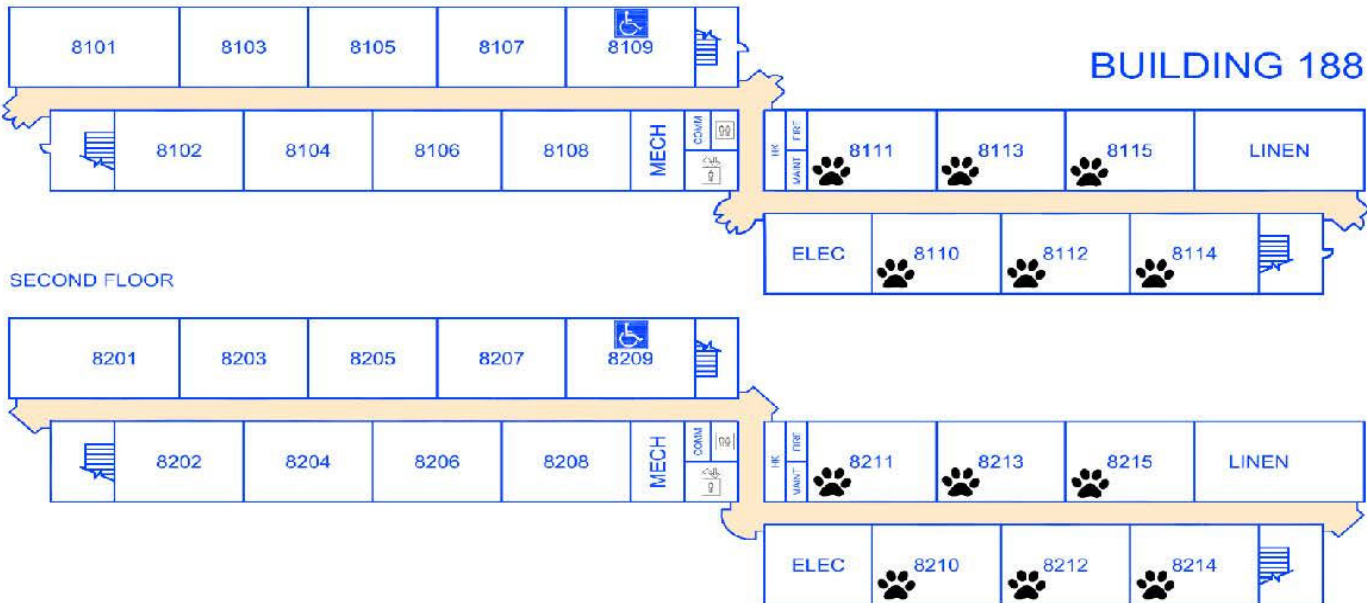
**BUILDING 185**



SECOND FLOOR

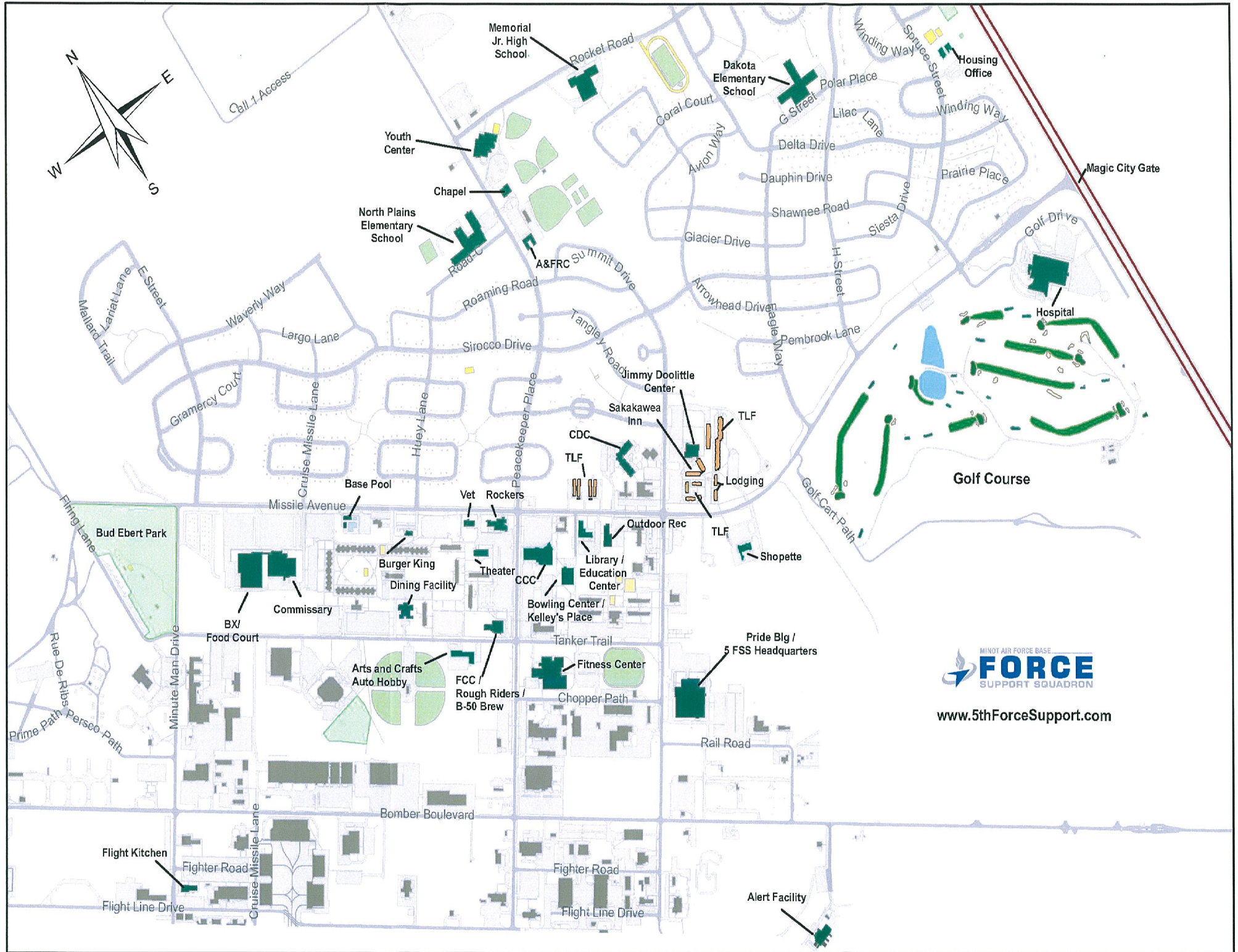
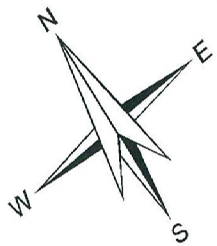


FIRST FLOOR



SECOND FLOOR





MINOT AIR FORCE BASE  
**FORCE**  
SUPPORT SQUADRON  
[www.5thForceSupport.com](http://www.5thForceSupport.com)



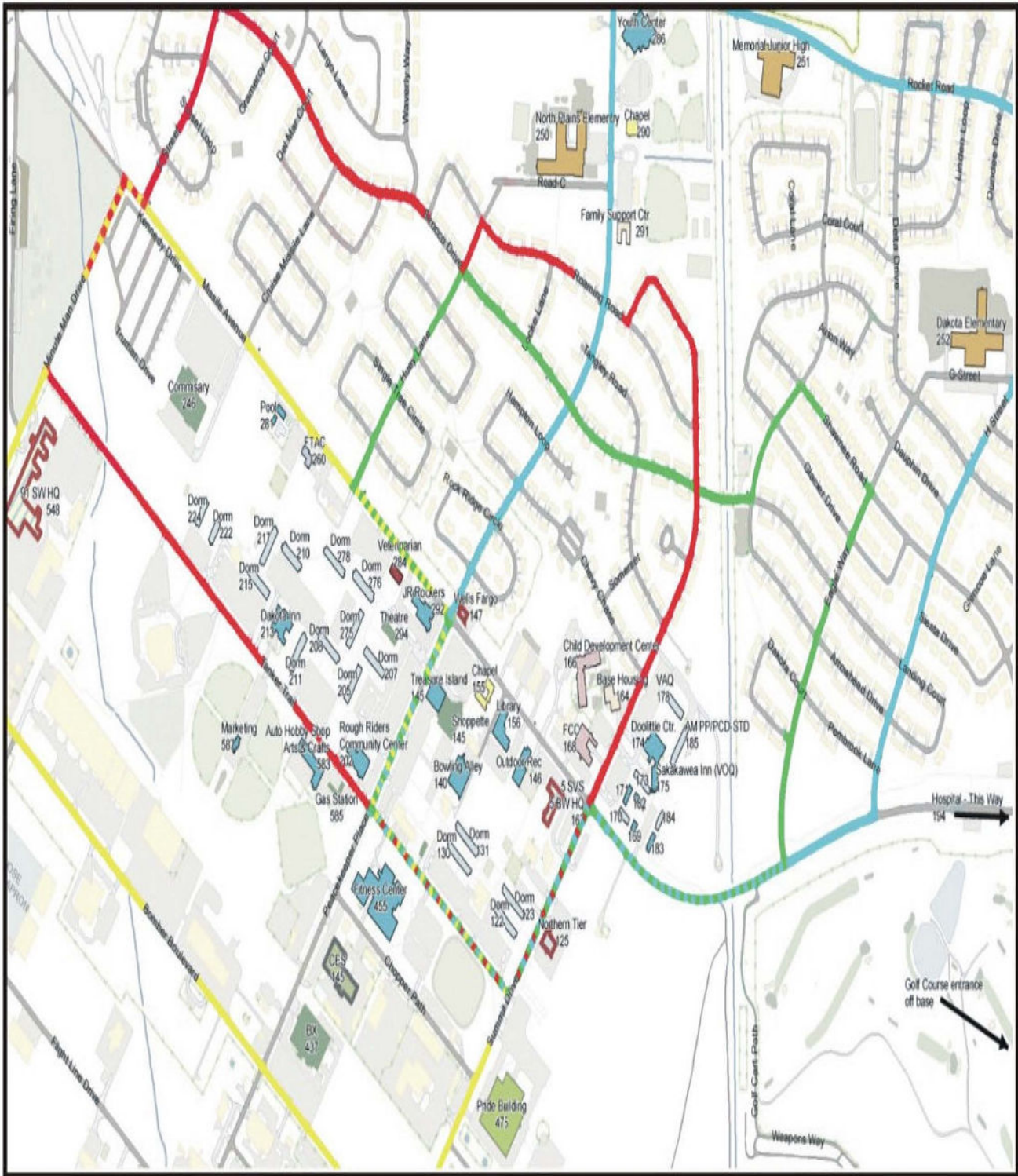
# Minot Air Force Base

"Only the Best Come North!"



5th Bomb Wing HQ	167 Summit Dr	167	Dock 2	862 Cruise Missile Ln	862	North Plains Elementary	101 C St	250
5th Medical Group	194 Missile Ave	194	Dock 3	868 Flight Line Dr	868	Northern Tier Federal Credit Union	210 Summit Dr	125
5th Civil Engineer Squadron	445 Peacekeeper Pl	445	Dock 4	863 Cruise Missile Ln	863	Outdoor Recreation Center	146 Missile Ave	146
91st Missile Wing HQ	546 Minute Man Dr	546	Dock 8	864 Cruise Missile Ln	864	PMEL Lab	774 Summit Dr	774
Airfield Operations	744 Peacekeeper Pl	744	Dock 9	758 Flight Rd	758	Post Office	135 Peacekeeper Pl	135
Airman Dormitories	122, 123, 130, 131, 205, 207, 210, 214, 216, 218, 221, 275, 276		Dock 10	763 Fighter Rd	763	PRIDE Building	475 Summit Dr	475
Military & Family Readiness Center	291 Peacekeeper Pl	291	Dorm Management	221 Missile Ave	221	Professional Development Center	260 Missile Ave	260
Airman Leadership School	220 Tanker Trl	220	DRMO	531 Bomber Blvd	531	Rockers Bar & Grill	292 Peacekeeper Pl	292
Base Exchange	248 Missile Ave	248	Education Center & Library	156 Missile Ave	156	B-Fifty Brew & Bomber Bistro	202 Peacekeeper Pl	202
Base Supply	527 Bomber Blvd	527	Fire Station	896 Flight Line Dr	896	Sakakawea Inn	173 Summit Dr	173
Base Theater	294 Peacekeeper Pl	294	Fitness Center	455 Chopper Path	455	Shoppette	186 Missile Ave	186
Bowling Center	140 Peacekeeper Pl	140	Flight Simulation Training	476 Trainer Trl	476	Skills Development Center	583 Tanker Trl	583
Burger King	330 Missile Ave	330	Golf Course	1176 Golf Drive	1176	Swimming Pool	281 Missile Ave	281
Child Development Center	166 Missile Ave	166	Housing Maintenance	289 Peacekeeper Pl	289	Temporary Lodging Facility	158-161, 172-174, 184, 185, 188	
Combined Community Complex	145 Missile Ave	145	Housing Office	164 Summit Dr	164	Vehicle Operators	442 Chopper Path	442
Commissary	246 Missile Ave	246	Jimmy Doolittle Center	174 Summit Dr	174	Veterinary Clinic/Papa Johns	284 Missile Ave	284
Community Center	256 Spruce St	256, 258	Law Enforcement Desk	547 Tanker Trl	547	Visitor's Center	15 Missile Ave	15
Dakota Elementary School	251 Rocket Road	251	Memorial Middle School	1 Rocket Rd	251	Welcome Center	101 Missile Avenue	183
Dakota Inn Dining Facility	213 Tanker Trl	213	Network Control Center	120 Summit Dr	120	Youth Center	286 Peacekeeper Pl	286
Dock 1	867 Flight Line Dr	867	Northern Lights Chapel	155 Missile Ave	155			
			North Plains Chapel	290 Peacekeeper Pl	290			

# Minot AFB Jogging Routes



**5K**

**6.2K**

**5K**

For 10K continue on to **RED**

**5K**